



# equitron®

## PETRI DISH FILLING LINE - 400C

### Applications:

- ❖ For pouring / filling agar / media onto 55 mm dia contact petri dishes.

### EQUITRON advantages:

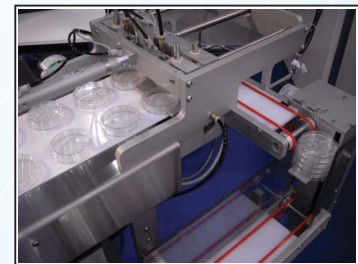
- ❖ Output capacity (measured in units per hour [UPH]) is ready to use / pack with 3 minutes dry time. No further waiting period.

### Standard Features:

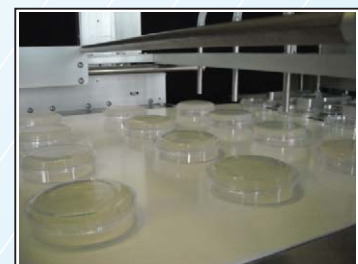
- ❖ Production rate at 3 minute dry time with lids off (production dry time is adjustable).
- ❖ 55 mm contact plates.
- ❖ Manual dish loading to input magazine.
- ❖ HEPA covered mini-environment with Polycarbonate hood.
- ❖ Filling via standard twin-channel peristaltic pump, additional pump optionally available as required for additives such as blood.
- ❖ PLC controls programmed to customer needs.
- ❖ Automatic stacking with dropstacker, adjustable stack heights (up to 10 dish max).
- ❖ Aluminum / Stainless / UHMW construction.
- ❖ Machine will include mount and sensor for inkjet printer supplied by customer. Print on lid, bottom or side of dish.



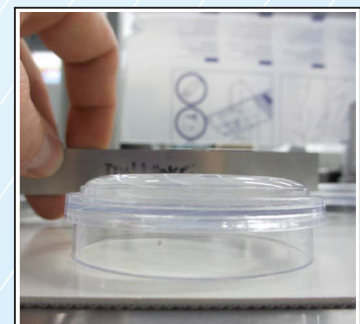
Contacts Overview



Contacts Output



Contacts poured



Concave

Model	Type	Petri Diameters	Capacity	Lanes	Footprint
#7315-0400C	Contact	55 mm	400 UPH	2	1.1 x 1.7 m

- Other capacities available from **400 UPH to 6000 UPH** and Petri Dish sizes from **55 mm to 100 mm** - Contact or Regular.

All electrical appliances work on 230V AC, 50Hz, single phase. Other Voltages available on request. Due to continuous improvement in design, the product supplied may have modified features.



**Medica Instrument Mfg Co**

105, Vasan Udyog Bhavan, Sun Mill Compound, Lower Parel (West)  
Mumbai 400013, INDIA • ☎ +91-22/6618-9999 • 📠 +91-22/6618-9996  
✉ sales@medicainstrument.com • www.medicainstrument.com



0138\_1406-3-1