

The power of documenting in your hands

equitron®

AUTOCLAVE SLEDOC Series



Designed with advanced technologies on the inside

equitron® SLEDOC Series

Autoclaves are ideal for Microbiology Labs, CSSD and Healthcare Practice where documenting the sterilisation cycle is mandatory

Steam Pressure Sterilisation is a process which does not deliver a direct result.

Today, modern labs, central sterile supply departments and healthcare practices are invariably audited and validated by third party agencies. Thus, it is essential to document the autoclaving cycle.

With five decades of experience in steam pressure sterilisation, Medica introduces the new *EQUITRON SLEDOC Series* Top Loading Autoclaves.

Real time printing of three temperature sensors along with F_0 summation, plus pressure channel.

With a Graphic Programmable Logic Controller, exceptional temperature management and progressive notifications, the SLEDOC will stand scrutiny of the toughest of auditors.



Leakproof sealing with registered gasket design

Over pressure safety

Safe and sturdy chamber manufactured to ASME standards in SS 304

Low water level cut off

Independent safety for over temperature

Saves Power bills by 20~30%

Online printing to 80 col DMP (printer part of standard supply)

Abrasion resistance and durable finish by heat cured epoxy coating on steel exterior / SS 304 for “-SS” models

Convenient and fast single locking of lid

Heater and pressure interlock for lid lock safety

Effortless lifting of lid with assisted support

Dual scales of psi and kPA with temperature readout on pressure gauge

Automatic purging and exhaust

Accurate temperature control with Graphical Programmable Logic Controller (PLC)

Electrical on/off safety switch

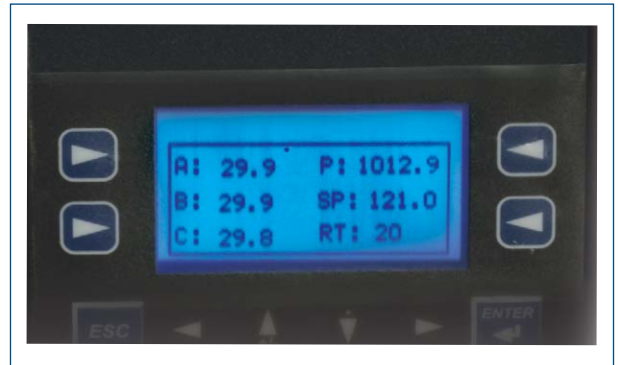
Easy draining of chamber

Easy manoeuvrability and placement

Documentation that will help you breeze through your audits

SAFETY FOR

- Over pressure
- Over temperature
- Electric overload
- Low water level
- Lid locked under pressure
- Process will not start if lid not locked fully
- Audio and visual alarms for sensor open and over pressure
- Chamber manufactured and tested as per ASME guidelines



Specimen of the Documentation Cycle

THE BEST PHARMA COMPANY		BATCH NO:0003						
MEDICA VSC3F1 ONLINE DATALOGGING REPORT								
DATE	TIME	SP	A (deg C)	B (deg C)	C (deg C)	P (mbar)	F0 (A)	
22-05-2015	10:15:12	121.0	90.1	90.5	90.2	1008.6	0.00	
22-05-2015	10:16:12	121.0	93.6	94.0	93.9	1013.1	0.00	
22-05-2015	10:17:12	121.0	96.1	96.5	96.4	1014.7	0.00	
22-05-2015	10:18:12	121.0	98.1	98.5	98.2	1015.2	0.00	
22-05-2015	10:19:12	121.0	99.4	99.7	99.5	1020.3	0.00	
22-05-2015	10:20:12	121.0	100.8	101.1	101.1	1056.1	0.00	
22-05-2015	10:21:12	121.0	102.6	102.9	102.8	1123.1	0.00	
22-05-2015	10:22:12	121.0	104.2	104.6	104.6	1190.3	0.00	
22-05-2015	10:23:12	121.0	106.1	106.5	106.4	1264.3	0.00	
22-05-2015	10:24:12	121.0	107.8	108.1	108.1	1339.2	0.00	
22-05-2015	10:25:12	121.0	109.6	109.9	109.9	1420.8	0.00	
22-05-2015	10:26:12	121.0	111.3	111.5	111.6	1504.6	0.00	
22-05-2015	10:27:12	121.0	113.1	113.4	113.4	1592.9	0.00	
22-05-2015	10:28:12	121.0	114.7	115.1	115.1	1683.4	0.00	
22-05-2015	10:29:12	121.0	116.4	116.7	116.8	1777.1	0.00	
22-05-2015	10:30:12	121.0	118.1	118.4	118.4	1871.1	0.00	
22-05-2015	10:31:12	121.0	119.7	119.9	120.0	1969.3	0.00	
22-05-2015	10:32:00	121.0	121.0	121.3	121.3	2051.7	0.00	
22-05-2015	10:33:00	121.0	121.3	121.6	121.6	2068.9	1.05	
22-05-2015	10:34:00	121.0	121.3	121.8	121.7	2076.7	2.12	
22-05-2015	10:35:00	121.0	121.3	121.6	121.7	2070.8	3.19	
22-05-2015	10:36:00	121.0	121.4	121.8	121.7	2076.1	4.29	
22-05-2015	10:37:00	121.0	121.4	121.7	121.7	2070.2	5.38	
22-05-2015	10:38:00	121.0	121.3	121.6	121.6	2066.7	6.43	
22-05-2015	10:39:00	121.0	121.1	121.5	121.5	2053.7	7.48	
22-05-2015	10:40:00	121.0	121.2	121.5	121.5	2051.8	8.52	
22-05-2015	10:41:00	121.0	121.2	121.6	121.6	2054.7	9.60	
22-05-2015	10:42:00	121.0	121.3	121.6	121.6	2057.7	10.67	
22-05-2015	10:43:00	121.0	121.3	121.7	121.7	2061.1	11.76	
22-05-2015	10:44:00	121.0	121.4	121.7	121.8	6067.2	12.86	
22-05-2015	10:45:00	121.0	121.5	121.8	121.8	2072.4	13.98	
22-05-2015	10:46:00	121.0	121.2	121.5	121.5	2053.4	15.03	
22-05-2015	10:47:00	121.0	121.1	121.4	121.5	2052.1	16.08	
22-05-2015	10:48:00	121.0	121.2	121.5	121.5	2048.3	17.12	
22-05-2015	10:49:00	121.0	121.2	121.5	121.5	2046.4	18.17	
22-05-2015	10:50:00	121.0	121.3	121.6	121.6	2049.9	19.24	
22-05-2015	10:51:00	121.0	121.4	121.7	121.7	2059.9	20.34	
22-05-2015	10:52:00	121.0	121.5	121.7	121.7	2062.2	21.46	
22-05-2015	10:53:00	121.0	121.6	121.8	121.8	2066.1	22.58	
22-05-2015	10:54:00	121.0	121.4	121.8	121.7	2062.4	23.68	
22-05-2015	10:55:00	121.0	121.4	121.8	121.7	2061.6	24.78	
22-05-2015	10:56:00	121.0	121.5	121.8	121.7	2062.4	25.87	
22-05-2015	10:57:00	121.0	121.5	121.7	121.6	2057.1	26.99	
22-05-2015	10:58:00	121.0	121.6	121.8	121.9	2067.4	28.14	
22-05-2015	10:59:00	121.0	121.5	121.7	121.7	2063.1	29.24	
22-05-2015	11:00:00	121.0	121.4	121.8	121.7	2061.1	30.36	
22-05-2015	11:01:00	121.0	121.5	121.8	121.7	2060.4	31.48	
22-05-2015	11:02:00	121.0	121.4	121.7	121.7	2057.9	32.58	

End of Cycle

UTILITIES REQUIRED

Electric supply: 230 VAC, 50 Hz, single phase, with two pole MCB of suitable rating as per heater power

Exhaust / drain line: Capable of handling steam temperatures upto 134°C and pressure upto 30 psi

Distilled water

Well ventilated room: with space of at least two feet on right side and one foot on back side



DOCUMENTING FEATURES

Real time printing of three temperature sensors along with F₀ summation, plus pressure channel

Printing in smart tabular format, with date, time and batch number

Prints to external DMP (part of standard supply)

Enables authentic documenting of every autoclave cycle

Technical Data

Model	Unit	#7440SLEDOC	#7441SLEDOC	#7451SLEDOC	#74403SLEDOC
		#7440SLEDOC-SS	#7441SLEDOC-SS	#7451SLEDOC-SS	#74403SLEDOC-SS
Capacity	L	75	113	180	75
Working ChamberDimensions	mm	Ø 400 x 600	Ø 450 x 710	Ø 550 x 760	Ø 400 x 600
Loading Type	-	Top			
Construction	-	External Structure of Steel, duly epoxy coated, rest SS 304			
	SS	Fully SS construction			
Carrier Dimensions	mm (nos)	Ø 350 x 550 (1) with separator	Ø 400 x 330 (2)	Ø 500 x 350 (2)	Ø 350 x 550 (1) with separator
Dressing Drum (Optional)	mm (inch) part code	Ø 380 x 300 (15x12") #S0082-25 (2 reqd)	Ø 380 x 300 (15x12") #S0082-25 (2 reqd)	NA	Ø 380 x 300 (15x12") #S0082-25 (2 reqd)
Heater power	kW	3.0	3.5	5.0	3.0
Temperature Range upto	°C	122.0	122.0	122.0	135.0
Operating Pressure	Psi / kPA	15 / 103.4	15 / 103.4	15 / 103.4	30 / 206.8
Duty Cycle	-	Four cycles in eight hour shift with a 30 minute cooling period			
Erlenmeyer Flasks capacity 250 ml	nos	9 x 2	14 x 2	22 x 2	9 x 2
Erlenmeyer Flasks capacity 500 ml	nos	7 x 2	9 x 2	14 x 2	7 x 2
Erlenmeyer Flasks capacity 1000 ml	nos	4 x 2	5 x 2	9 x 2	4 x 2
Duran Bottles capacity 250 ml	nos	16 x 2	21 x 2	34 x 2	16 x 2
Duran Bottles capacity 500 ml	nos	9 x 2	14 x 2	22 x 2	9 x 2
Duran Bottles capacity 1000 ml	nos	7 x 2	9 x 2	14 x 2	7 x 2
Outer Dimensions (WxDxH + lid open)	mm	670 x 490 x 870 + 400	725 x 545 x 1050 + 470	825 x 650 x 1080 + 580	670 x 490 x 870 + 400
Packing Dimensions (WxDxH)	mm	970 x 720 x 1290	1020 x 770 x 1350	1150 x 890 x 1420	970 x 720 x 1290
Gross Weight	kg	97	121	150	101

All electrical appliances work on 230V AC, 50Hz, single phase. Other Voltages available on request. Due to continuous improvement in design, the product supplied may have modified features.



Medica Instrument Mfg Co

105, Vasan Udyog Bhavan, Sun Mill Compound,
Lower Parel (W), Mumbai 400013, India.
T: +91 22 6618-9999 • F: +91 22 6618-9996
E: medica@medicainstrument.com
W: www.medicainstrument.com



0155_1509-2-4