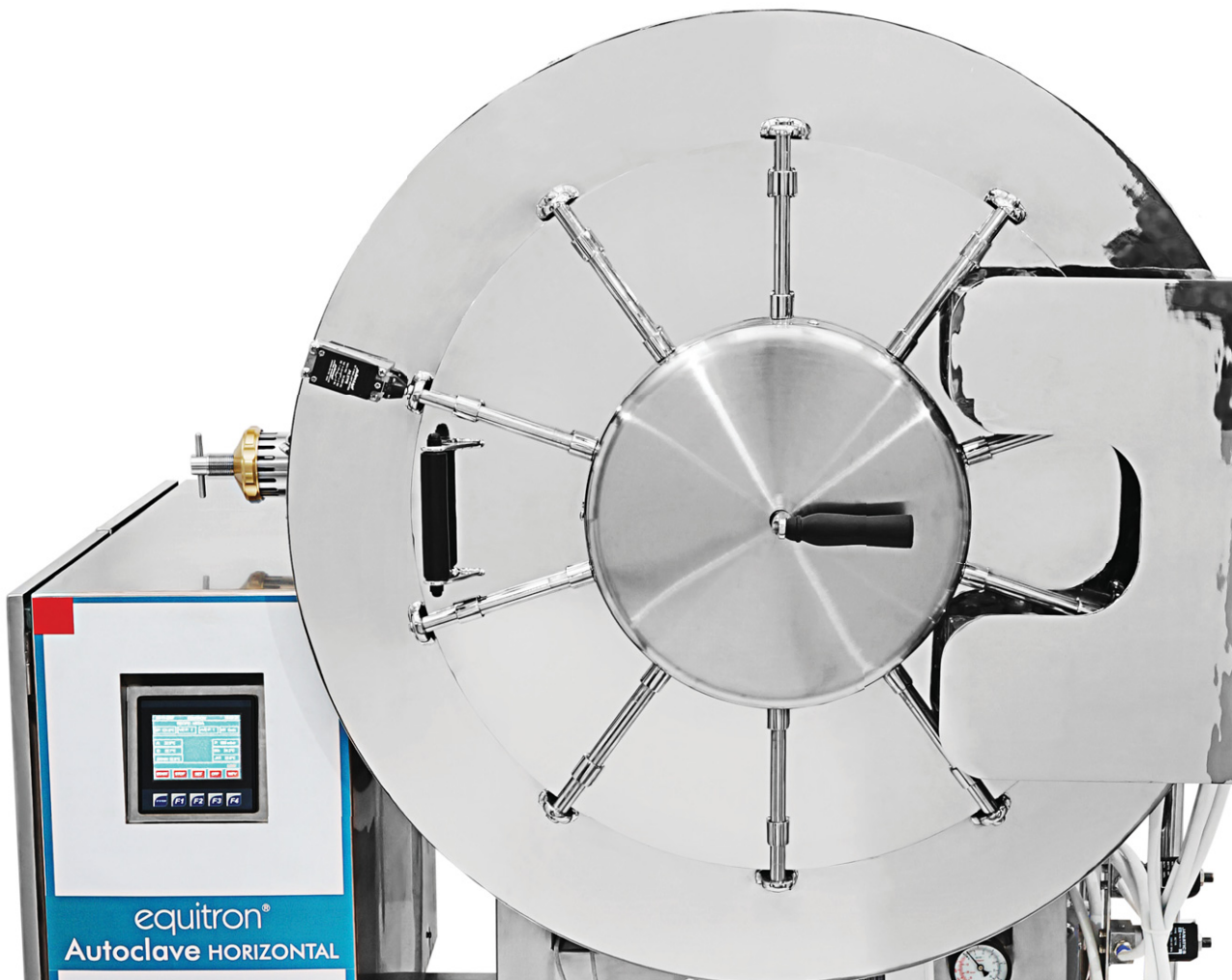


# equitron<sup>®</sup>

## Autoclave Horizontal Cylindrical

Unmatched Automation.

A powerhouse designed for your critical applications.





A design that makes the most of every square inch

The thoughtfully constructed cylindrical chamber and trays allow for optimal loading by making the most of the space available inside

## Effortless Lid Locking

Locking your Autoclave has never been easier - the unique single lever locking mechanism makes opening and closing the Autoclave a breeze



### VERSATILITY FOR THE MOST DEMANDING OF APPLICATIONS



## KEY FEATURES

- Compliant to HTM 2010 and FDA
- Chamber and loading trays of SS 316
- Chamber manufactured and tested as per ASME guidelines
- Option of integrated steam generator or connecting to external steam source
- Pre & post vacuum using a superior and low-noise liquid ring pump
- Unique single lever locking system for effortless locking
- Easy access to all critical components
- Built-in validation port for self calibration checks
- Independent pressure gauges for chamber, jackets and gasket (in case of double door - gasket pressure gauges are fitted for sterile and non-sterile sides)
- 0.2µ filter to normalise chamber pressure at end of cycle – with sterile air
- Online documenting to DMP of 3 temperature sensors with F0, plus one pressure channel along with status information
- Service and calibration reminders
- Spring loaded safety valves for steam generator and chamber
- Piping of SS 304 / SS 316 with Tri Clover Clamps
- Touchscreen Graphical Programmable Logic Control (PLC)
- Passes Bowie Dick Test
- Option of 21 CFR Part 11 Compliant Software



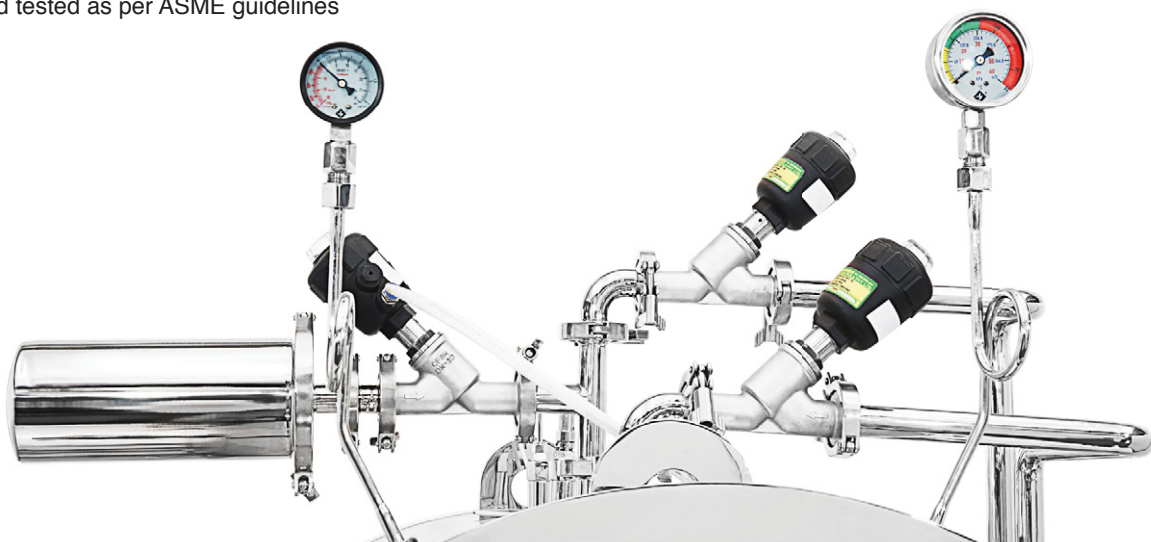
## POWERFUL TOUCHSCREEN CONTROLLER

- At the heart of the Autoclave is a Programmable Logic Controller (PLC) with a 3.5" touchscreen colour display that offers a flexible user-friendly interface and accurate control
- All parameters including set parameters & alarms are displayed on the touchscreen
- Selection of preset cycles from cycle library (user editable)
- Preset Bowie Dick Test / Vacuum Leak Test (VLT)
- Corrective action programme on power failure



## SAFETY







- Over pressure (chamber, jacket and steam generator)
- Over temperature
- MCB for electrical safety
- Pressure interlock on door
- Door interlock on cycle start
- Audio-visual alarms for sensor open, over pressure & temperature
- Chamber manufactured and tested as per ASME guidelines

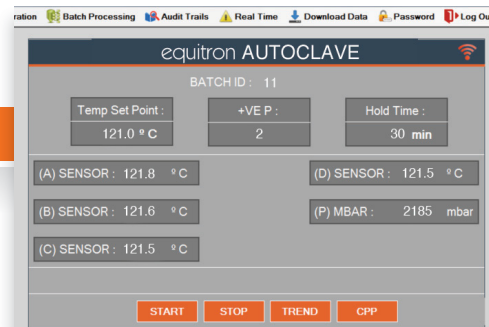


## EQUISOFT - 21 CFR PART 11 COMPLIANT SOFTWARE

The EQUISOFT 21 CFR Part 11 compliant software is engineered with intelligent capabilities allowing the user to monitor important cycle data online, maintain electronic records and signatures.

### EQUISOFT FEATURES

- 
**Audit Trail:** secure user login with 100% trace audit trail with option of adding user comments for each event
- 
**Data Backup:** view & analyse the data when you need it
- 
**Input/ Output/ Alarm Status:** status of all control inputs and output (door open, heater status, alarms, etc.) displayed on PC
- 
**Reports & Graphs:** view reports for process parameters & graphical trends for sensors including F0 value
- 
**Authorization:** define access levels for multiple users, create new user logins and specify user rights
- 
**Data Protection:** multi-level password protection, password ageing, account lockout for multiple invalid login attempts, force user logoff after inactivity



## TECHNICAL SPECIFICATIONS

Model	Unit	#7461-0075-CH1G #7461-0075-CH1E	#7461-0138-CH1G #7461-0138-CH1E	#7461-0216-CH1G #7461-0216-CH1E	#7461-0216-CH2G #7461-0216-CH2E
Capacity	L	75	138	216	216
Doors	nos	1	1	1	2
Chamber Dimensions	mm	Ø 40 x 60	Ø 40 x 110	Ø 50 x 110	Ø 50 x 110
Steam Source	-	Built-in Steam Generator (models ending with 'G') Without steam generator - for connection to onsite steam source (models ending with 'E')			
Temperature Range upto	°C	135.0	135.0	135.0	135.0
Operating Pressure	psi / kPA	30 / 206.8	30 / 206.8	30 / 206.8	30 / 206.8
Duty Cycle	-	Four cycles in eight hour shift with a 30 minute cooling period			
Erlenmeyer Flasks capacity 250 ml	nos	16	30	60	60
Erlenmeyer Flasks capacity 500 ml	nos	4	8	26	26
Erlenmeyer Flasks capacity 1000 ml	nos	3	6	15	15
Erlenmeyer Flasks capacity 2000 ml	nos	3	5	7	7
Duran Bottles capacity 250 ml	nos	19	39	80	80
Duran Bottles capacity 500 ml	nos	16	30	48	48
Duran Bottles capacity 1000 ml	nos	4	8	20	20
Duran Bottles capacity 2000 ml	nos	3	6	12	12
Electrical Supply	-	230 VAC, 50 Hz, Single Phase	415 VAC, 50 Hz, Three Phase + 1N	415 VAC, 50 Hz, Three Phase + 1N	415 VAC, 50 Hz, Three Phase + 1N

For utilities required and other technical specification, kindly contact the company representative for further details.



**Medica Instrument Mfg Co**

Mumbai, India.  
T: +91 22 6618-9999 • F: +91 22 6618-9996  
E: sales@medicainstrument.com  
W: www.medicainstrument.com

equitron®